

Área total: 12.298,69 m²/ Perímetro: 653,31m

LADOS	Vértices	AZIMUTES	DISTANCIA (m)	COORDENADAS (UTM)		COORDENADAS (GEOGRAFICAS)	
				N (metros)	E (metros)	Latitude	Longitude
V01 V02		234°30'26"	48,91	6.995.820,86	745.509,17	27°08'18,0092" S	48°31'22,4507" W
V02 V03		338°55'32"	34,15	6.995.792,46	745.469,35	27°08'18,9569" S	48°31'23,8757" W
V03 V04		338°55'32"	230,09	6.995.824,33	745.457,07	27°08'17,9299" S	48°31'24,3442" W
V04 V05		30°03'24"	54,10	6.996.039,03	745.374,33	27°08'11,0112" S	48°31'27,5010" W
V05 V06		157°52'30"	22,97	6.996.085,85	745.401,43	27°08'09,4735" S	48°31'26,5509" W
V06 V07		157°52'30"	210,56	6.996.064,58	745.410,08	27°08'10,1587" S	48°31'26,2217" W
V07 V08		157°52'30"	20,74	6.995.869,52	745.489,38	27°08'16,4418" S	48°31'23,2039" W
V08 V01		157°52'30"	31,79	6.995.850,30	745.497,20	27°08'17,0609" S	48°31'22,9063" W

Área Parque Municipal da Gatetinha - Bombinhas: 4.336,61m²/ Perímetro: 477,66m

LADOS	Vértices	AZIMUTES	DISTANCIA (m)	COORDENADAS (UTM)		COORDENADAS (GEOGRAFICAS)	
				N (metros)	E (metros)	Latitude	Longitude
V08 VA		333°14'10"	11,59	6.995.850,30	745.497,20	27°08'17,0609" S	48°31'22,9063" W
VA VB		331°56'14"	25,21	6.995.860,64	745.491,97	27°08'16,7285" S	48°31'23,1035" W
VB VC		379°30'17"	22,03	6.995.882,89	745.480,11	27°08'16,0136" S	48°31'23,5499" W
VC VD		317°25'22"	27,26	6.995.899,64	745.465,80	27°08'15,4789" S	48°31'24,0813" W
VD VE		323°46'43"	20,07	6.995.919,71	745.447,36	27°08'14,8390" S	48°31'24,7649" W
VE VF		330°44'24"	19,33	6.995.935,90	745.435,51	27°08'14,3209" S	48°31'25,2066" W
VF VG		332°49'04"	16,17	6.995.952,77	745.426,06	27°08'13,7791" S	48°31'25,5617" W
VG VH		333°40'31"	19,67	6.995.967,15	745.418,67	27°08'13,3169" S	48°31'25,8402" W
VH VI		331°40'14"	14,74	6.995.984,78	745.409,95	27°08'12,7500" S	48°31'26,1693" W
VI VJ		339°30'37"	17,55	6.995.997,76	745.402,95	27°08'12,3330" S	48°31'26,4327" W
VJ VK		0°43'16"	13,31	6.996.014,20	745.396,81	27°08'11,8031" S	48°31'26,6673" W
VK VL		13°16'28"	13,30	6.996.027,51	745.396,98	27°08'11,3708" S	48°31'26,6706" W
VL V06		22°37'10"	26,13	6.996.040,46	745.400,03	27°08'10,9483" S	48°31'26,5692" W
V06 V07		157°52'30"	210,56	6.996.064,58	745.410,08	27°08'10,1587" S	48°31'26,2217" W
V07 V08		157°52'30"	20,74	6.995.869,52	745.489,38	27°08'16,4418" S	48°31'23,2039" W

Área destinada a RPPN: 6.425,02m²/ Perímetro: 599,42m

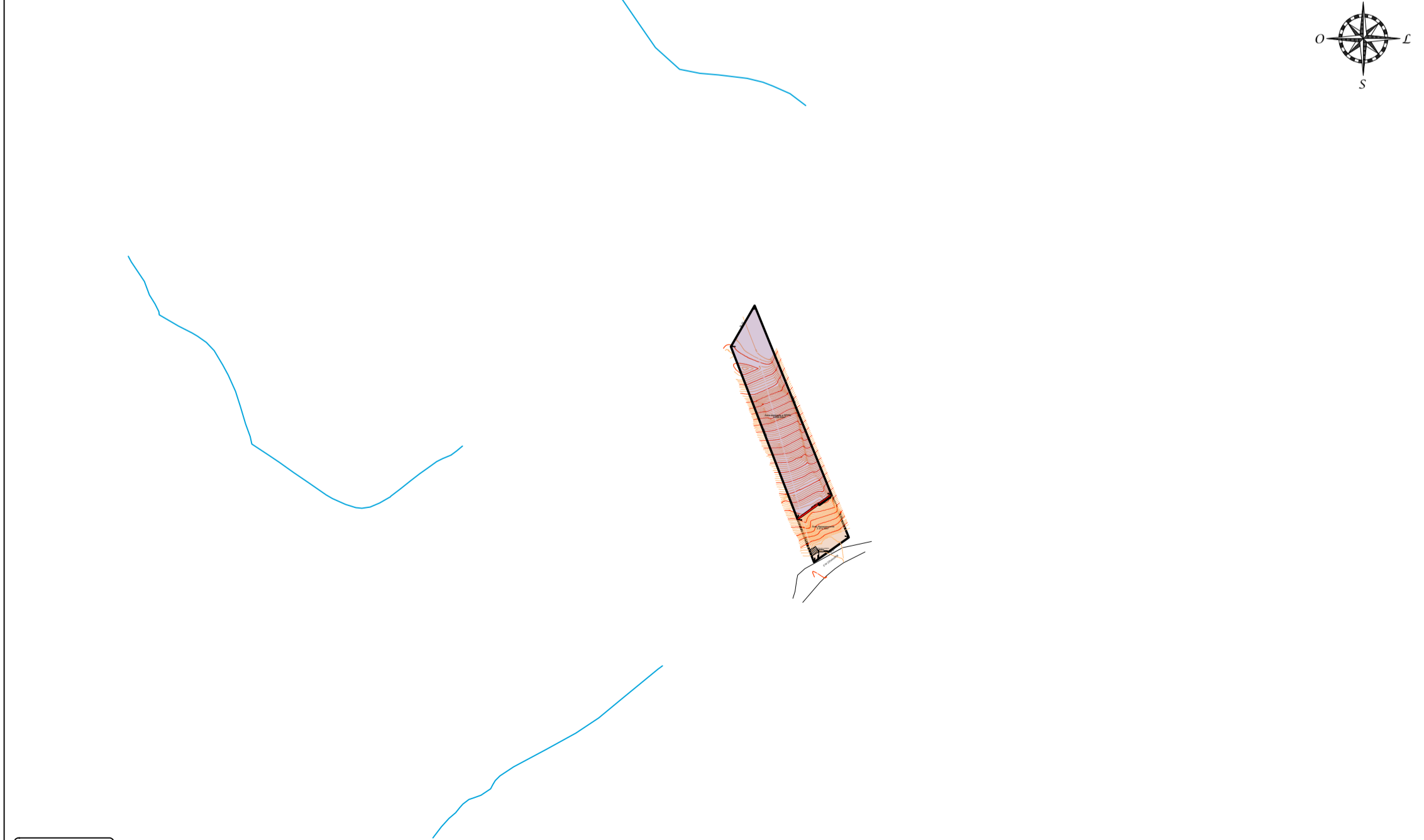
LADOS	Vértices	AZIMUTES	DISTANCIA (m)	COORDENADAS (UTM)		COORDENADAS (GEOGRAFICAS)	
				N (metros)	E (metros)	Latitude	Longitude
VA V03		234°30'26"	48,08	6.995.852,25	745.496,21	27°08'16,9983" S	48°31'22,9436" W
V03 V04		338°55'32"	230,09	6.995.824,33	745.457,07	27°08'17,9299" S	48°31'24,3442" W
V04 V05		30°03'24"	54,10	6.996.039,03	745.374,33	27°08'11,0112" S	48°31'27,5010" W
V05 V06		157°52'30"	22,97	6.996.085,85	745.401,43	27°08'09,4735" S	48°31'26,5509" W
V06 VL		202°37'10"	26,13	6.996.064,58	745.410,08	27°08'10,1587" S	48°31'26,2217" W
VL VK		193°16'28"	13,30	6.996.040,46	745.400,03	27°08'10,9483" S	48°31'26,5692" W
VK VJ		180°43'16"	13,31	6.996.027,51	745.396,98	27°08'11,3708" S	48°31'26,6706" W
VJ VI		159°30'37"	17,55	6.996.014,20	745.396,81	27°08'11,8031" S	48°31'26,6673" W
VI VH		151°40'14"	14,74	6.995.997,76	745.402,95	27°08'12,3330" S	48°31'26,4327" W
VH VG		153°40'31"	19,67	6.995.984,78	745.409,95	27°08'12,7500" S	48°31'26,1693" W
VG VF		152°49'04"	16,17	6.995.967,15	745.418,67	27°08'13,3169" S	48°31'25,8402" W
VF VE		150°44'24"	19,33	6.995.952,77	745.426,06	27°08'13,7791" S	48°31'25,5617" W
VE VD		143°46'43"	20,07	6.995.935,90	745.435,51	27°08'14,3209" S	48°31'25,2066" W
VD VC		137°25'22"	27,26	6.995.919,71	745.447,36	27°08'14,8390" S	48°31'24,7649" W
VC VB		130°30'17"	22,03	6.995.899,64	745.465,80	27°08'15,4789" S	48°31'24,0813" W
VB VA		152°16'36"	34,62	6.995.882,89	745.480,11	27°08'16,0136" S	48°31'23,5499" W

Área não RPPN: 1.606,91m²/ Perímetro: 165,10m

LADOS	Vértices	AZIMUTES	DISTANCIA (m)	COORDENADAS (UTM)		COORDENADAS (GEOGRAFICAS)	
				N (metros)	E (metros)	Latitude	Longitude
V01 V02		234°30'26"	48,91	6.995.820,86	745.509,17	27°08'18,0092" S	48°31'22,4507" W
V02 V03		338°55'32"	34,15	6.995.792,46	745.469,35	27°08'18,9569" S	48°31'23,8757" W
V03 VA		54°30'26"	48,98	6.995.824,33	745.457,07	27°08'17,9299" S	48°31'24,3442" W
VA V08		153°11'10"	2,18	6.995.852,25	745.496,21	27°08'16,9983" S	48°31'22,9436" W
V08 V01		157°52'30"	31,79	6.995.850,30	745.497,20	27°08'17,0609" S	48°31'22,9063" W

ESCALA 1/500

Planta dos Cursos d'agua



ESCALA 1/3.500

Convenções topográficas

VERTICE: V 01
 LAT: 27°08'18,0092" S
 LONG: 48°31'22,4507" W
 DATUM: SIRGAS 2000
 PROJEÇÃO: UTM
 ESCALA: 1/500
 DATA: 13/02/2023
 AUTOR: Ramon Correia



Laudo Técnico

Atesto, sob as penas da lei, que efetuei pessoalmente o Levantamento da área e que os valores corretos dos azimutes e as distâncias das confrontações são as apresentadas nesta planta e memorial descritivo que acompanha.

Ramon Correia
Técnico em Agrimensura - CFT BR 05604402940

Carimbos

PLANTA DO IMÓVEL GEORREFERENCIADO

Local: Rodovia SC 412, Bairro: Centro, Porto Belo/SC

Matrícula nº: 15.831

Requerente: André Luiz Carboni

Data: 13/02/2023

Conteúdo: Levantamento Topográfico Planialtimétrico

André Luiz Carboni
CPF 715.659.040-20

RAMON CORREIA
ARQUITETURA